



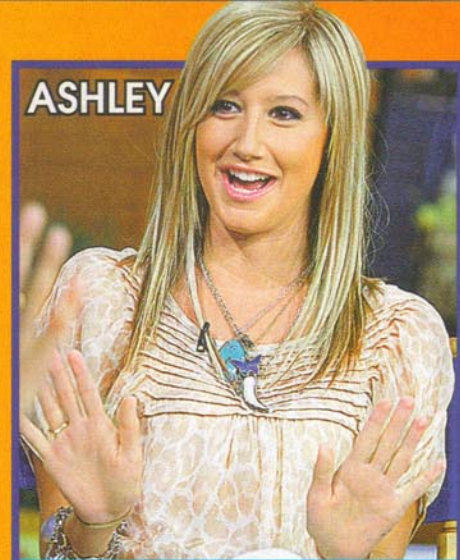
CORBIN

CREATIVE: Corbin's head line dips at the end, so he has lots of imagination!
ROMANTIC: His long, gently sloping heart line shows that he falls in love easily.



FERGIE

INTUITIVE: Fergie has rectangular palms and short fingers, so she should trust her gut.
HONEST: Her straight fingers show that she's upfront and direct with people.



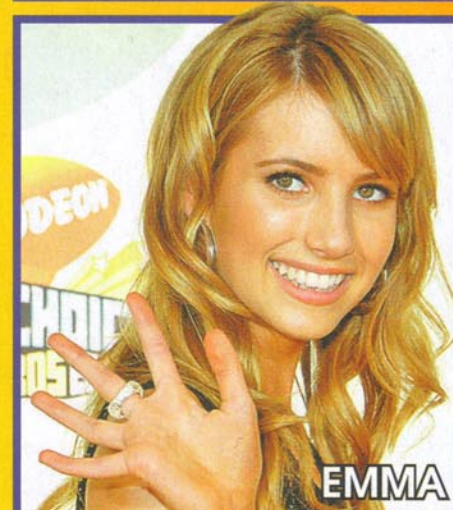
ASHLEY

ORGANIZED: Her knuckles are big, so she likes to keep everything in order.
SENSITIVE: Ashley has well-padded finger tips, so she has an emotional side, too.



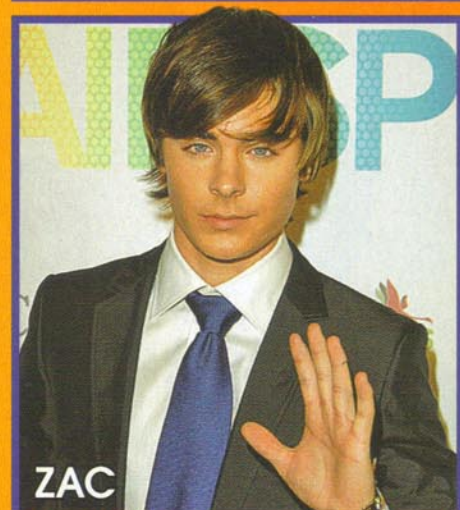
PETE

MOODY: Pete's middle finger is crooked, which means he can get a bit crabby.
WORRIER: His head line and life line are tied together, so he thinks about stuff a lot.



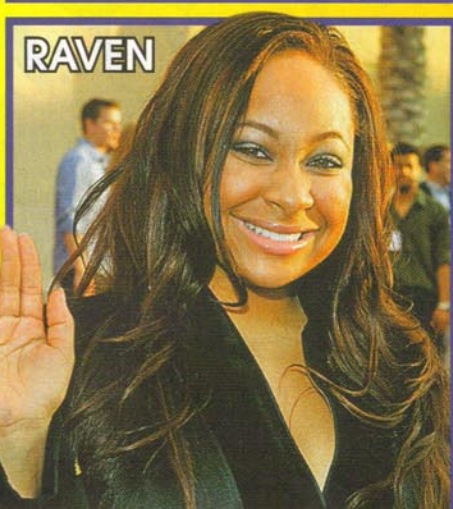
EMMA

AMBITIOUS: Emma has a long index finger, so she's a really determined girl who shoots for the stars. She tries her best at everything, no matter what.



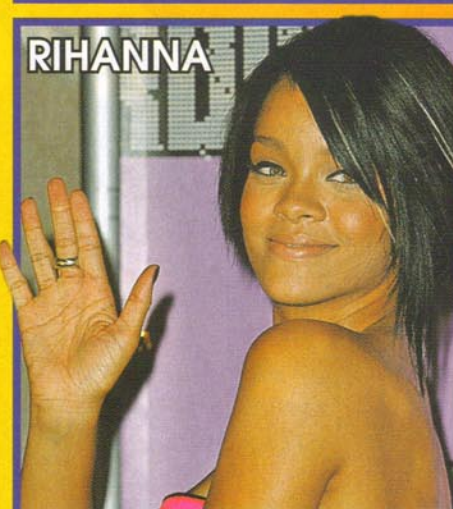
ZAC

PEACEMAKER: His curved pinky points to a knack for helping everyone get along.
THINKER: Zac's heart line meets his head-line, so he tends to analyze his feelings.



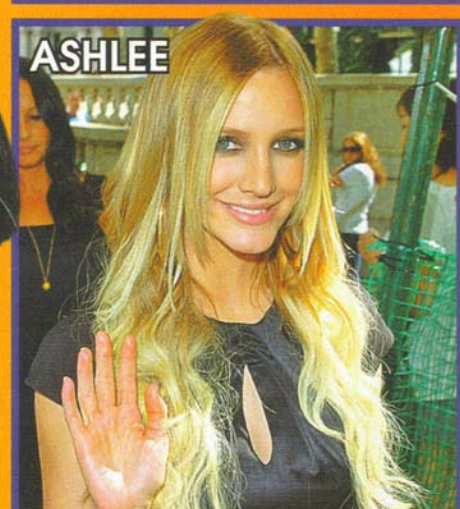
RAVEN

AFFECTIONATE: Raven's heart line starts between her index finger and her middle finger, so it's easier for her to show her feelings than to talk about them.



RIHANNA

LOYAL: Rihanna has long lines parallel to her life line, so she keeps friends for life.
REBEL: Her head line and life line are far apart, so she likes to do things her own way.



ASHLEE

INDECISIVE: Ashlee's head line splits, so she has trouble making up her mind. She has a creative side and a practical side, and it's tough for her to choose between them.